

introducing

Series N1 Linear Axis



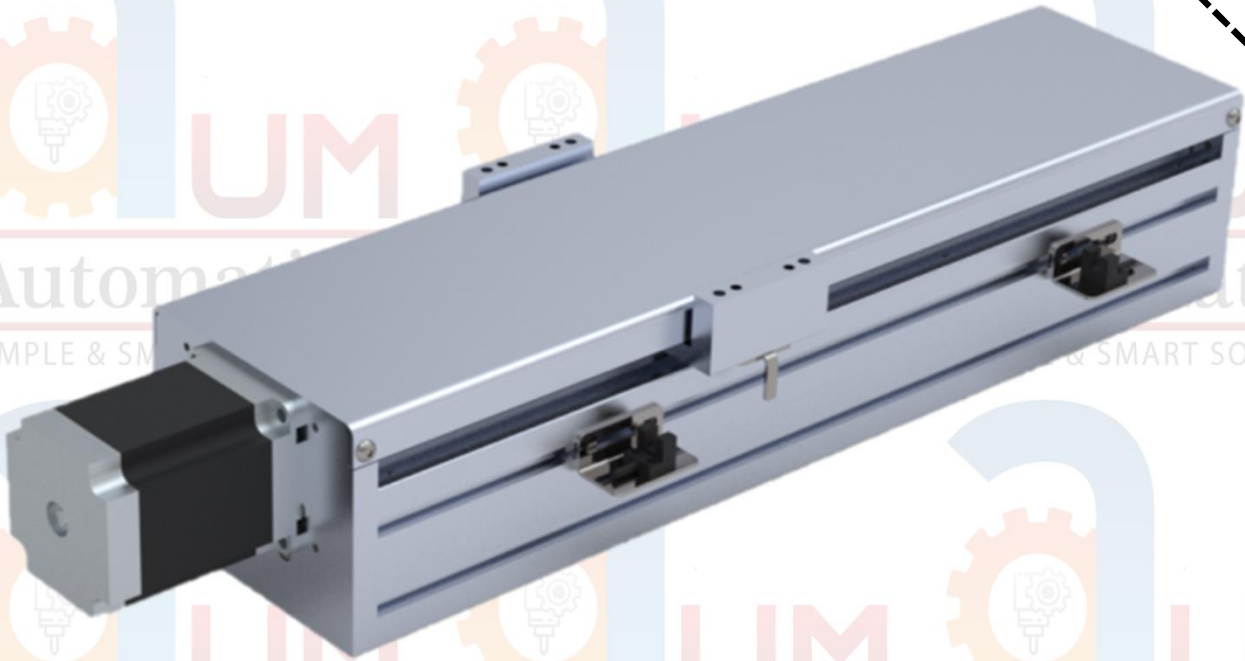
Introduction

In our linear modules are available a wide selection of Ball Screw or lead screws and belt drives to ensures high levels of speed and positioning accuracy.

- Customized solutions according the specific customer request.
- N1 Linear Axis can be nearly arbitrary combined within one series and between different series.
- Multi axis systems can be equipped with gearboxes, couplings, switches and additional with energy chains.
- Depending on the task, N1 Linear Axis offer not only flexible driving and guiding systems but also allow adequate freedom for customized solutions.
- In our linear modules are available a wide selection of ball or lead screws, linear motors and belt drives to ensures high levels of speed and positioning accuracy

This technical catalogue provides an overview of our Linear Axis range and forms the basis of our discussions with **you – our customer.**





BSD110



BSC80

Ordering Information

N1 - BSD - 110 - 04 - 200 - MF0 - S1 - M

Series

N1

Drive Type

BSD: Ball Screw

LSD: Lead Screw

BLD: Belt Drive

Size

110: 110 mm

120: 120 mm

Lead

4 : 4 mm

5 : 5 mm

10 : 10 mm

16 : 16 mm

B1 : Belt option

Stroke

50 : 50 mm

100 : 100 mm

600 : 600 mm

Motor Flange

MF0 : Without Flange

MF1 : For 100 W Servo

MF2 : For 200 W Servo

MF3 : For Nema 23 Stepper

Sensor

N : Without Sensor

L44 : L44 Fork sensor

Motor

M0 : Without Motor

M1 : For 100 W Servo

M2 : For 200 W Servo

M3 : For Nema 23 Stepper

Single Axis Series

BSD Series



Features :

- Compact design with ball or lead screw.
- Aluminum material for lightweight and rigidity.
- Multiple option for Drive Motor.
- Inline and parallel(belt) gear boxes.
- Customized motor adapter available.
- Different cover option for most applications.
- Available in different sizes and strokes as per requirement.
- Integrated coupling , no need of external mount.

Applications :

The Linear Axis are used in many different applications, such as:

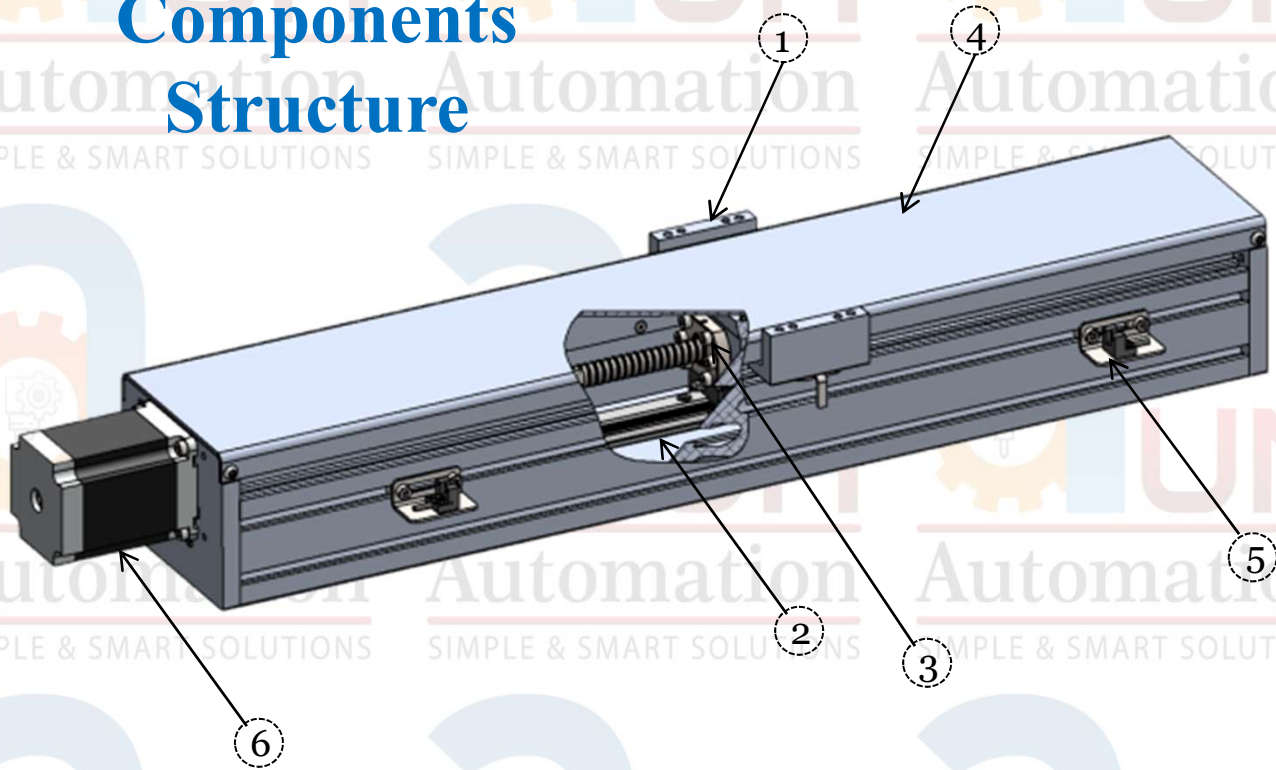
- Machine tool manufacture
- Packaging and printing machines
- Special and general engineering
- Wood and paper industry
- Automation and assembly lines
- Medical engineering

and much more ...

Single Axis Series

BSD Series

Components Structure



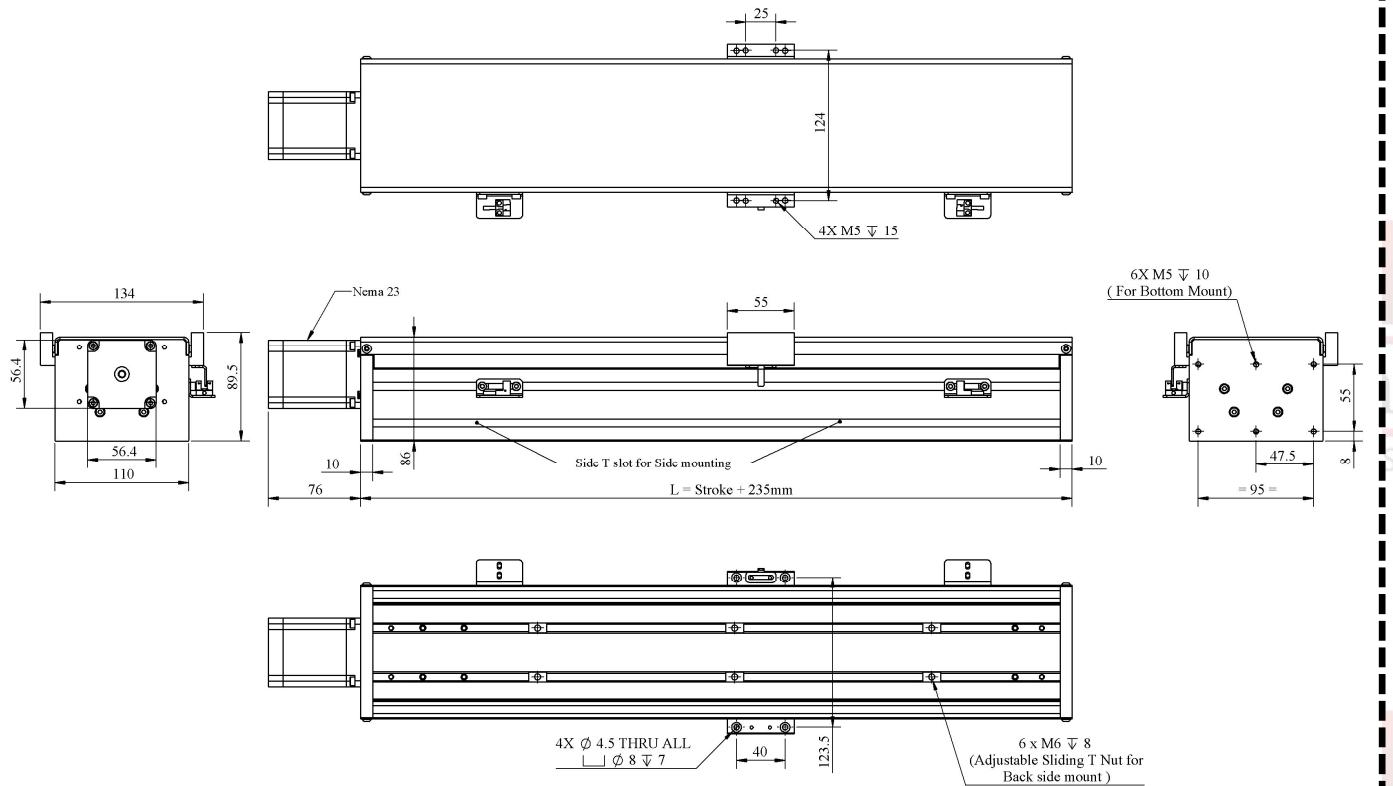
1. Slider
2. Linear Rail
3. Screw Drive
4. Top Cover
5. Sensor
6. Motor

BSD Series is Ball screw / Lead screw driven linear module. The product is compact, delicate & simple structure. It is the best choice for customers who need compact and light linear module axis.

Single Axis Series BSD Series

Dimension Detail with Nema 23 Stepper Motor

SIMPLE & SMART SOLUTIONS SIMPLE & SMART SOLUTIONS SIMPLE & SMART SOLUTIONS



Automation
SIMPLE & SMART SOLUTIONS

Automation
SIMPLE & SMART SOLUTIONS

Automation
SIMPLE & SMART SOLUTIONS

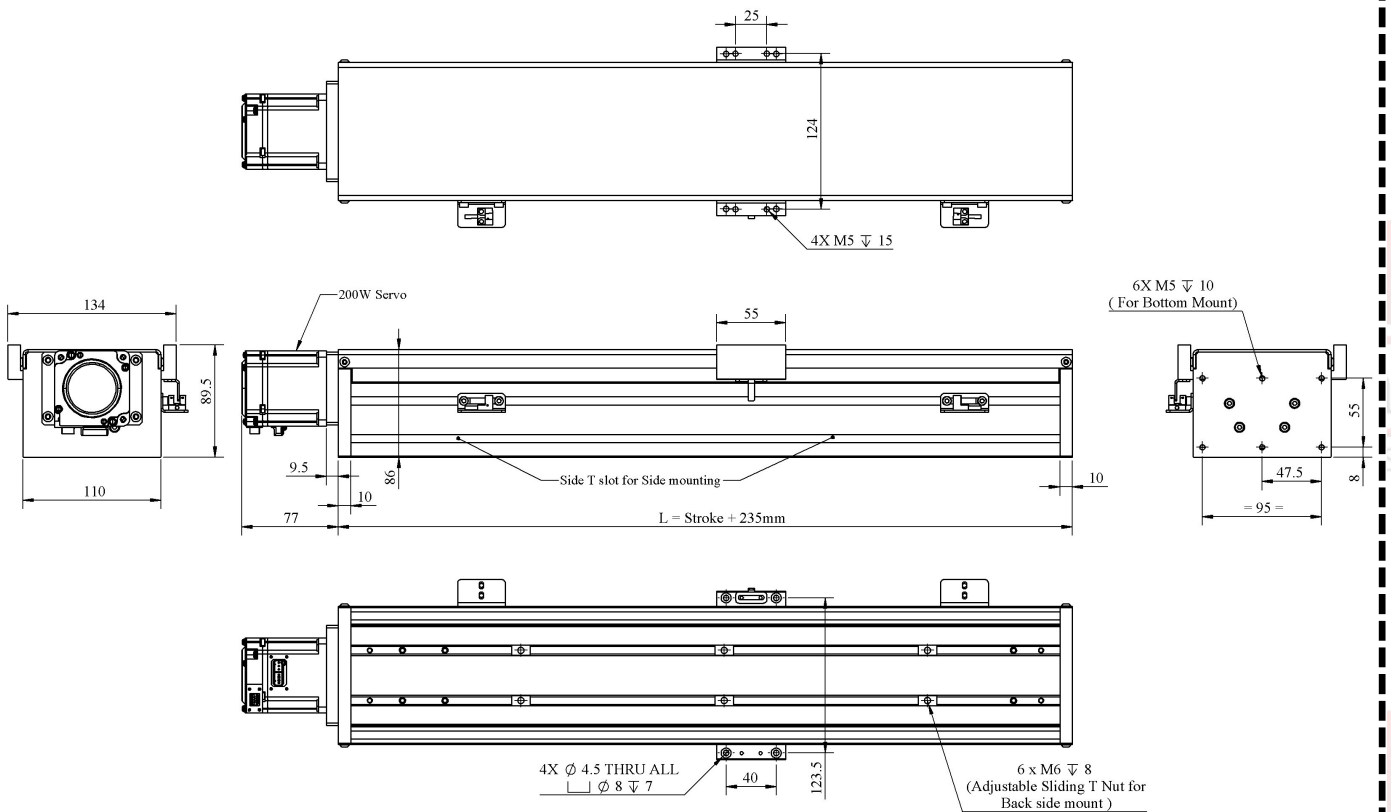
Automation
SIMPLE & SMART SOLUTIONS

Automation
SIMPLE & SMART SOLUTIONS

Automation
SIMPLE & SMART SOLUTIONS

Single Axis Series BSD Series

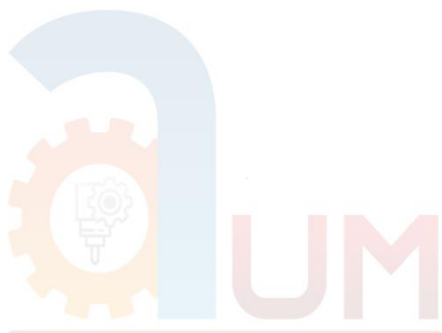
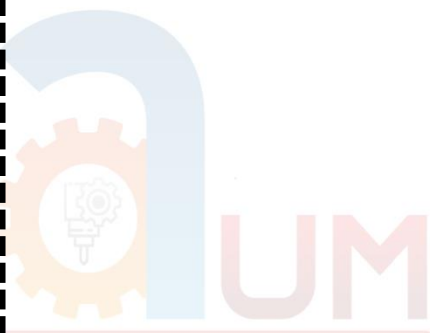
Dimension Detail with 200 W Servo Motor



Automation
SIMPLE & SMART SOLUTIONS

Automation
SIMPLE & SMART SOLUTIONS

Automation
SIMPLE & SMART SOLUTIONS



Automation
SIMPLE & SMART SOLUTIONS

Automation
SIMPLE & SMART SOLUTIONS

Automation
SIMPLE & SMART SOLUTIONS

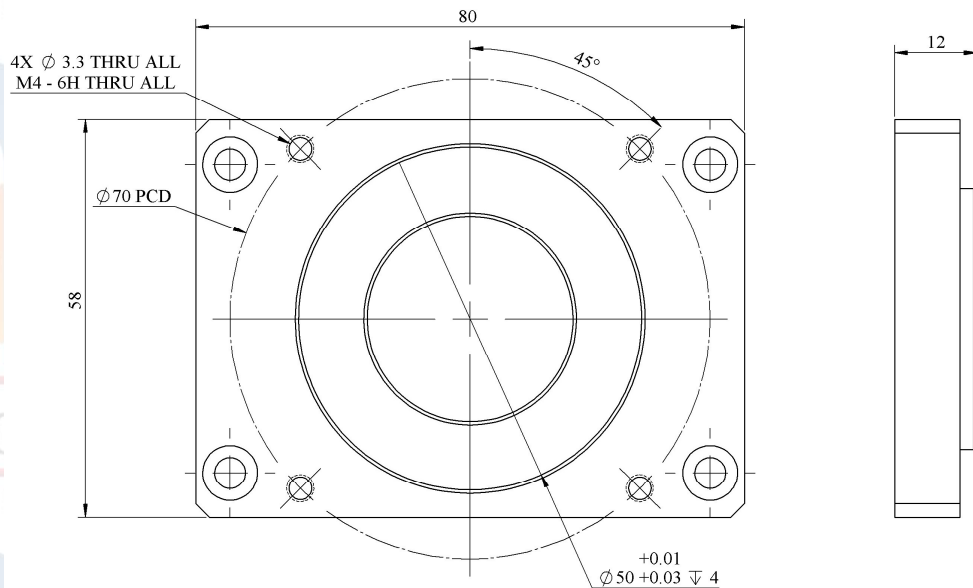
Single Axis Series

BSD Series

Code: PL200W

Extension Plate for 200 W Servo Motor

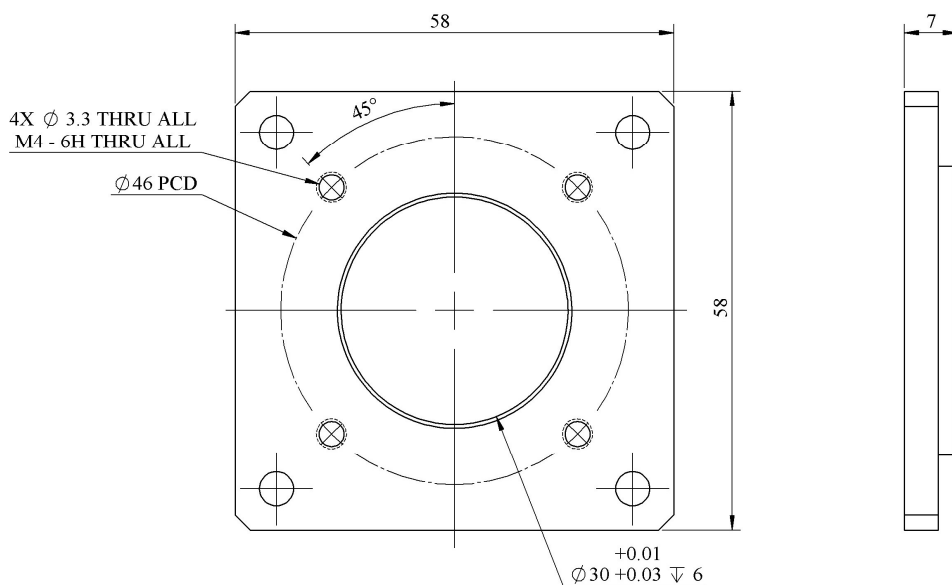
Material: Aluminum Anodized



Code: PL100W

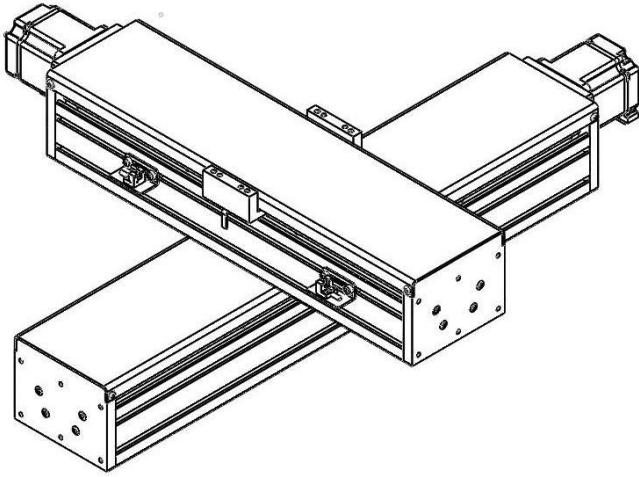
Extension Plate for 100 W Servo Motor

Material: Aluminum Anodized

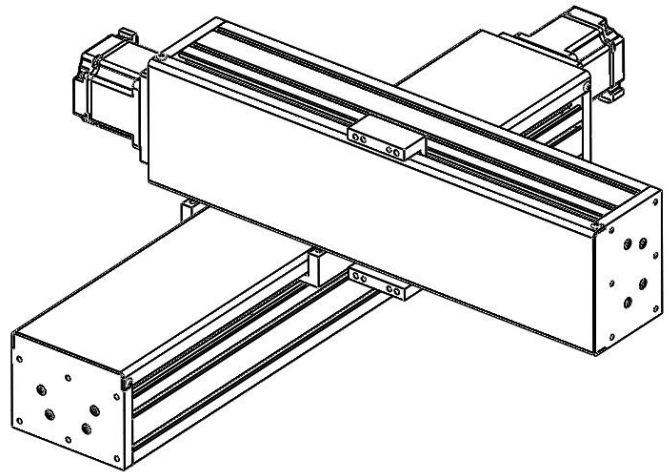


Possible Combinations

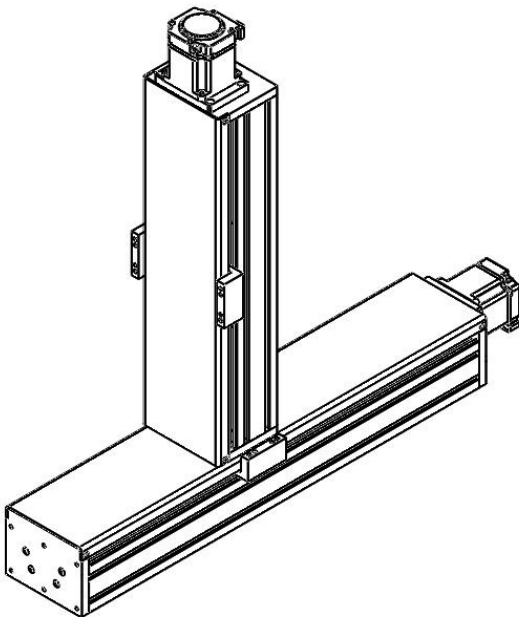
BSDXY001



BSDXY002

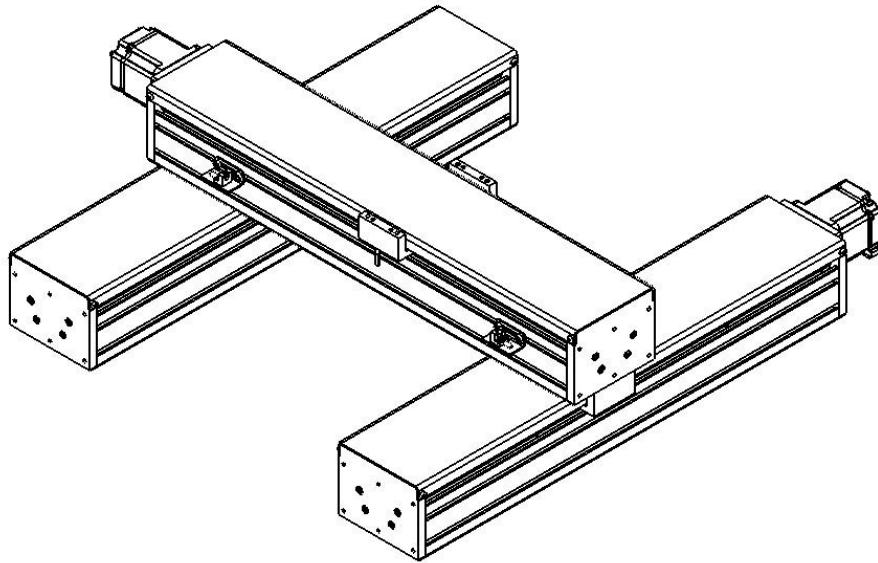


BSDXY003

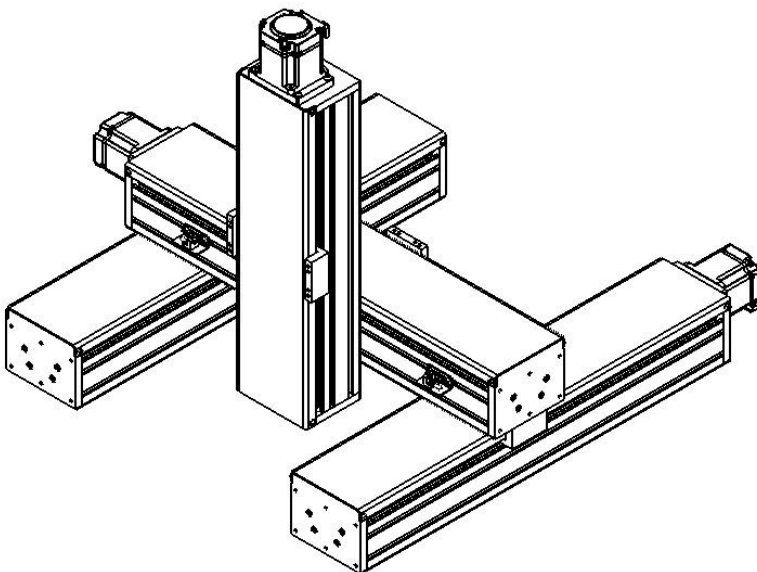


Possible Combinations

BSDXY004



BSDXY005



Automation
SIMPLE & SMART SOLUTIONS

Automation
SIMPLE & SMART SOLUTIONS

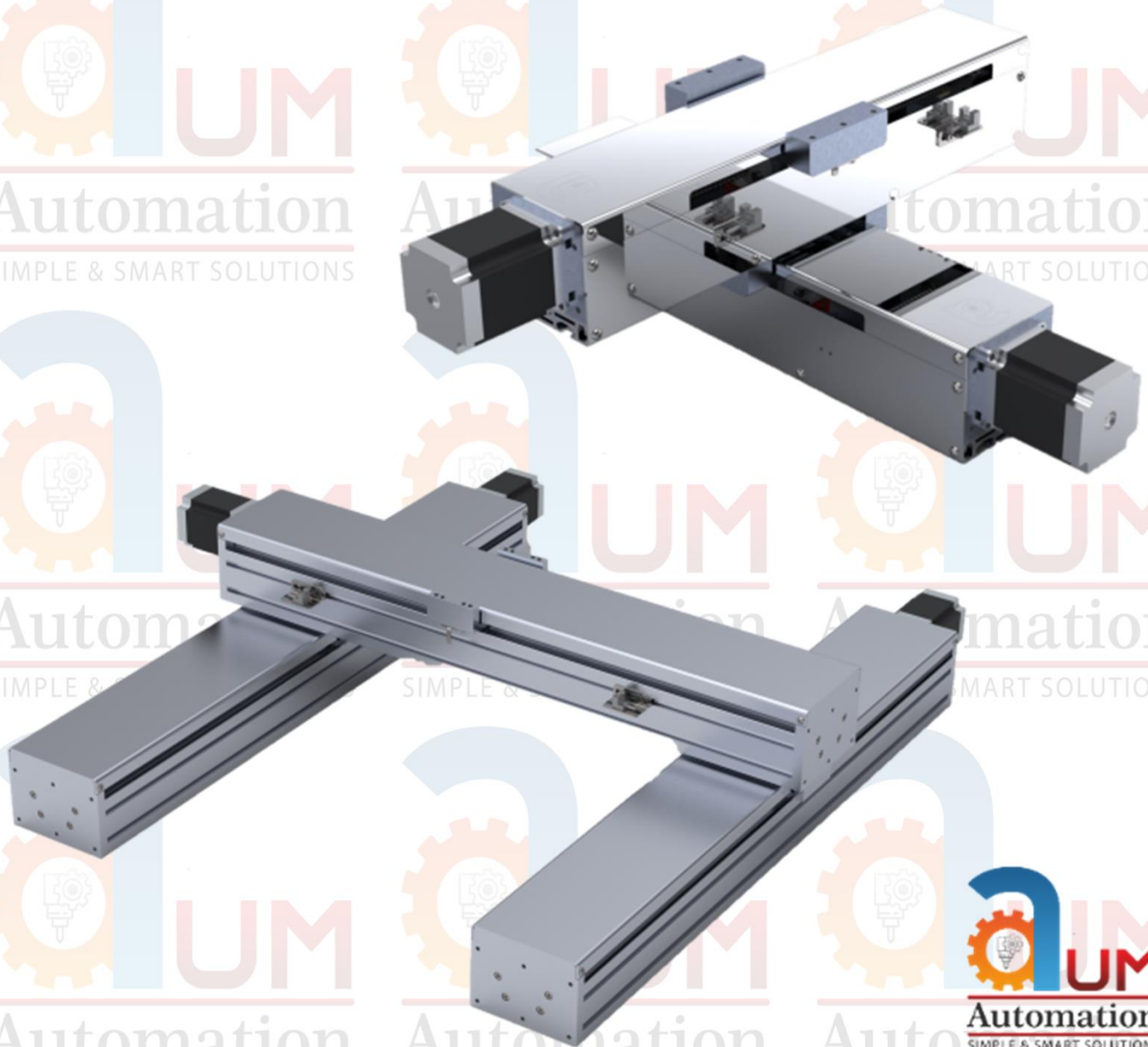
Automation
SIMPLE & SMART SOLUTIONS

Automation
SIMPLE & SMART SOLUTIONS

Possible Combinations

With help of these axis its easy to use in Single stage axis , 2 Stage Axis, gantry Axis , Z axis, X-Y Axis.

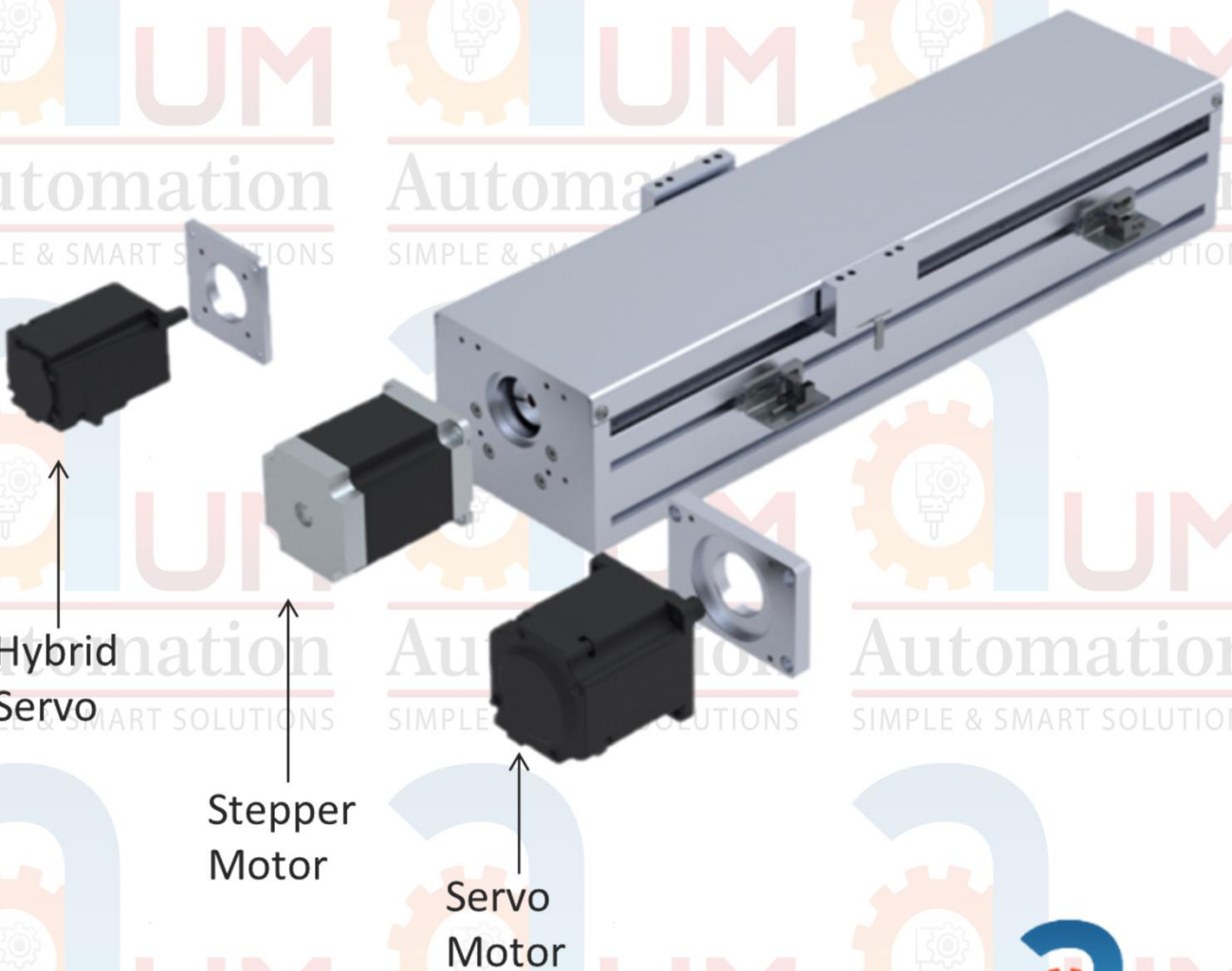
Easy to assemble these Linear Module with each other.



MODULAR DESIGN FOR DRIVE

In modular design for drive motor, its easy to choose / replace motor in this linear axis by simply replacing the appropriate Motor mounting plate.

Easy to assemble these motor in this Linear Module.



MODULAR DESIGN FOR STROKE

In modular design for stroke we made in such a way that we can get Fast and accurate linear module from 1 mm Stroke to 500 mm Stroke length.

Easy to expand the size even in future by replacing old Linear Module with new one.





Aum Automation
Gandhinagar, Gujarat-382016, India.

Mobile:- +91 9998849078

Email:- Aumautomation1@gmail.com

Web :- <https://www.indiamart.com/aumautomation-gandhinagar/>